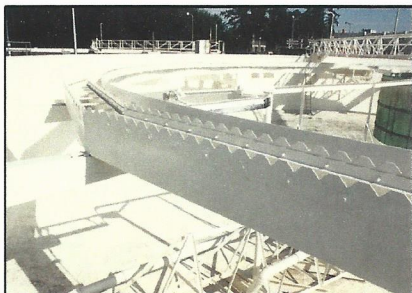


Gulf Coast Paint Mfg., Inc.

Super Mastic

PC-517

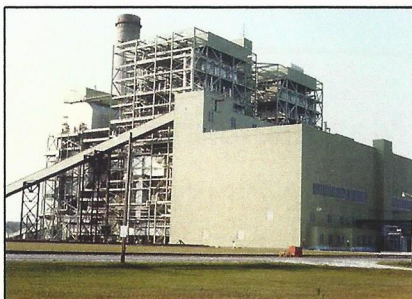


A VERY HIGH CHEMICAL RESISTANT FLAKE FILLED EPOXY MASTIC

A high performing two component, high solids, high build, cycloaliphatic polyamine cured Epoxy that can be applied at 15 mils dry in one coat on vertical surfaces. This unique coating has excellent chemical, abrasion, impact, and weather resistance with outstanding adhesion to marginally prepared surfaces. PC-517 Epoxy is also available in Low Temp Cure down to 20 degrees F.

PRODUCT FEATURES

1. Self Priming on steel
2. Can be applied on damp surfaces
3. Cures down to 40° F. (Low temp PC-517 cures down to 20 Degrees F.)
4. Excellent chemical resistance to acids, caustics, and many solvents
5. Performs well over epoxy mortars and properly primed concrete surfaces
6. Excellent as a secondary containment coating
7. Excellent as a coating for internal tank linings*
8. Meets all EPA and air pollution regulations. V.O.C. is 72 GMS/Liter
9. Outstanding impact and abrasion resistance
10. Capable of high film build, wraps around edges in one coat
11. Meets USDA Standards



CHEMICAL RESISTANCE

SPLASH SPILL - INTERMITTENT IMMERSION

70% Sulfuric Acid
10% Calcium Hypochlorite
Black Liquor
20% Acetic Acid
10% Sodium Hypochlorite
Carbon Tetrachloride
20% Nitric Acid
5% Hydrogen Peroxide
Jet Fuel
50% Citric Acid
Ethyl Acetate

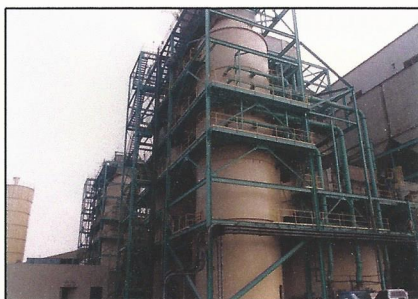
36% Hydrochloric Acid
Toluene
Xylene
Distilled Water
50% Sodium Hydroxide
Trichlorethylene
Fresh & Salt Water
20% Ammonium Hydroxide
Lactic Acid
Hydrogen Sulfide
Crude Oil



PRODUCT USES

Recommended for structural steel, tank linings, chemical clarifiers, vessels, equipment, pipe racks, storage tanks, plant cooling towers, food processing, pharmaceutical, pulp and paper mills, waste water treatment facilities, fertilizer plants, refineries, power plants, coal handling sites, mines and marine installations.

*For use in internal tank linings, contact Gulf Coast Paint for recommendation.



Gulf Coast Paint Mfg. Inc. / 30075 County Road 49 / Loxley, Alabama 36551
Phone: 251-964-7911 Fax: 251-964-7918

Website Address: www.gulfcoastpaint.com / Email Address: info@gulfcoastpaint.com

MAXIMUM CHEMICAL PROTECTION FOR:

- Structural Steel
- Fuel Storage Tanks
- Processing Equipment
- Pipelines & Racks
- Conveyor Systems
- Storage Silos
- Offshore Platforms
- Rail Highway Bridges
- Pulp & Liquor Tanks
- Rail & Hopper Cars
- Bulk & Handling Cranes
- Transportation Vehicles
- Steel Decks & Grating
- Chemical Storage Tanks
- Handrails & Ladders
- Clarifiers & Rakes

ENGINEERED COATING SYSTEMS FOR USE IN:

- Chemical Processing Plants
- Pulp & Paper Mills
- Electric Power Plants
- Petroleum Refineries
- Food Processing Plants
- Steel Mills & Cement Plants
- Pharmaceutical Manufacturing
- Fertilizer & Insecticide Plants
- Waste Water Treatment Plants
- Marine Installations
- Coal Handling Sites
- Textile & Furniture Mills

UNIQUE FORMULAS PROVIDE HIGH PERFORMANCE WITH:

- Epoxy Novolacs
- Amine Cured Epoxies
- Phenolic Resins
- Phenalkamines
- Cyclo-Aliphatics
- Polyester Polyurethanes
- Wet Process Coatings
- Acrylic Polyurethanes
- Moisture Cured Urethanes
- Low Temperature Cures
- USDA Approved Systems
- VOC Compliance

GULF COAST PAINT MFG., INC.
30075 County Road 49 • Loxley, Alabama 36551