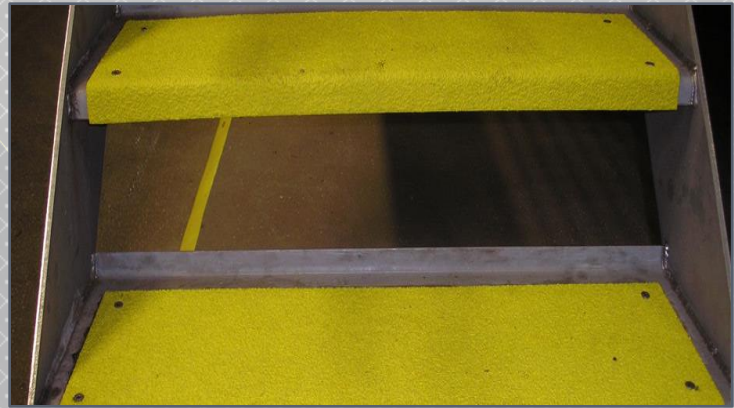


GULF COAST PAINT MFG., INC. FOOD & BEVERAGE PROCESSING COATINGS

Key Products for Floors & Stairs: PC-1850, PC-1875, PC-650



PC-1875 100% solids, two component Cycloaliphatic Epoxy Resin designed for concrete restoration and protection in extremely chemical corrosive environments. PC-1875 has excellent chemical resistance to acids, caustics, salts, alcohol, and other chemicals in the Food Processing Industry.

- Self-leveling, easy to apply
- Excellent abrasion and impact resistance
- Low odor

PC-650 is a two component, heavy duty non-skid epoxy coating. PC-650 is designed as a heavy duty non-skid coating that helps to provide slip resistance in wet and slippery conditions.

- Designed for wet areas
- Ready to use non-skid coating
- Available in low temperature cure down to 25°F

PC-1850 100% Solids Epoxy is a specially formulated two component, 100% Solids Epoxy Coating designed for use where a hard, durable, tile-like high gloss floor finish is desired.

- Low odor
- Self-leveling, easy to apply
- High gloss, can be applied between 10-60 mils

30075 County Road 49, Loxley, AL 36551

Phone: 251-964-7911

email: info@gulfcoastpaint.com

www.gulfcoastpaint.com

GULF COAST PAINT MFG., INC.

FOOD & BEVERAGE PROCESSING COATINGS

Key Products for Walls and Ceilings
PC-240, PC-270, PC-590/591



PC-240 Water Based Epoxy is a uniquely formulated two component, water-based Epoxy Coating which is based on the newest technology of Emulsion Chemistry. Key benefits:

- Low odor
- High gloss, tile like finish
- Easy clean up with soap and water



PC-590/591 are 100% solids, solvent free, two component Cyclo-Aliphatic Epoxy Mastic Coatings. Both provide very low permeability along with excellent chemical, impact and abrasion resistance.

- May be applied on wet or underwater surfaces
- Self priming – no primer needed
- Cures down to 35°F

PC-270 is a uniquely formulated Non-Yellowing, two component, polyester epoxy coating. PC-270 uses specially selected polymer resins to produce a hard, high gloss tile-like finish. Key benefits:

- Non-yellowing
- Outstanding wash and scrubability
- Good chemical and abrasion resistance

30075 County Road 49, Loxley, AL 36551

Phone: 251-964-7911

email: info@gulfcoastpaint.com

www.gulfcoastpaint.com