

GULF COAST PAINT MFG., INC.

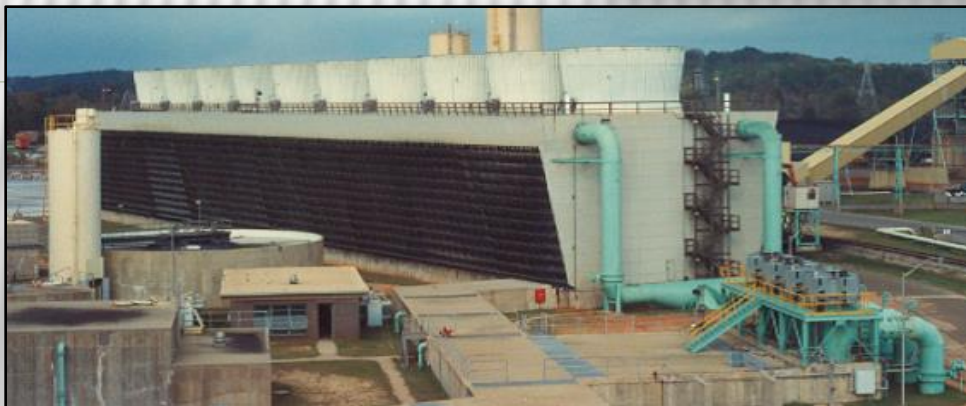
PROTECTIVE COATINGS FOR POWER PLANTS

Gulf Coast Paint provides protective coatings that are chemical and abrasion resistant for the Power Generation Industry. Our full line of high performance coatings are designed to withstand the abuse of these corrosive environments.



KEY APPLICATIONS

- Structural Steel
- Tanks
- Vessels
- Cooling Towers
- Conveyors
- Concrete floors in turbine and demin. rooms
- Secondary Containment



GULF COAST PAINT MFG., INC.

PROTECTIVE COATINGS FOR POWER PLANTS



GULF COAST PAINT'S PRODUCT LINE INCLUDES THE FOLLOWING KEY COATING SYSTEMS:

Chemical Resistant Epoxies - Moisture Tolerant Coatings - UV Resistant Coatings - Fast Drying and Low Temperature Curing Coatings - Concrete Containment Coatings

MCU-100 Moisture Cured Urethane

- One component, moisture cured urethane
 - Fast recoat, 1-2 hours
- High heat resistance, up to 400°F dry
 - Excellent corrosion resistance
 - Cures down to 18°F

PC-517 Cyclo-Aliphatic Epoxy

- 92% Solids – Low odor
 - Self priming
 - May be applied on damp surfaces
 - Cures down to 40°F
- (Low Temp Hardener cures down to 25°F)

PC-1500 Epoxy Novolac

- 100% Solids, No odor or V.O.C.
- Outstanding resistance to acids, alkalis, and most industrial chemicals and many solvents
 - Excellent for Secondary Containment

CT-370 Acrylic Aliphatic Urethane

- High solids, acrylic aliphatic urethane
 - Excellent UV & gloss protection
 - Non-chalking and non-yellowing
 - Available in most colors and safety colors

PC-590/591 Wet Surface Epoxy

- 100% Solids - No odor
 - May be applied underwater
- Can be applied on damp or wet pipes
 - Self Priming

PC-650 Heavy Duty Non Skid Epoxy

- Easy to apply, ready to use Anti Slip Coating
- Excellent abrasion and impact resistance
 - Can be applied with a roller, trowel or squeegee
- Available in a Low Temp Hardener that cures down to 25°F