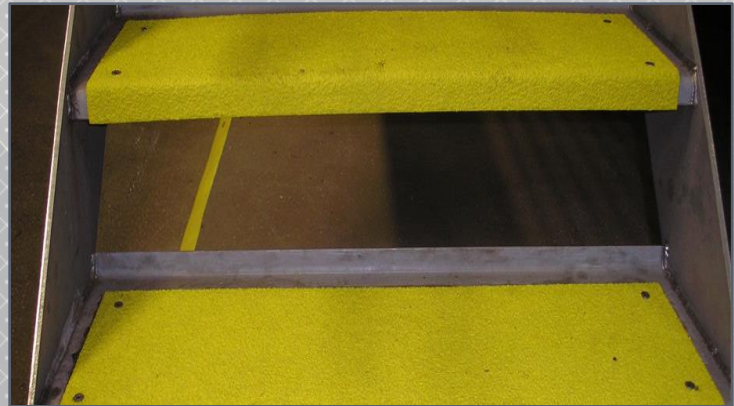


GULF COAST PAINT MFG., INC. FOOD & BEVERAGE PROCESSING COATINGS

Key Products for Floors & Stairs: PC-1850, PC-1875, PC-650



PC-1875 100% solids, two component Cycloaliphatic Epoxy Resin designed for concrete restoration and protection in extremely chemical corrosive environments. PC-1875 has excellent chemical resistance to acids, caustics, salts, alcohol, and other chemicals in the Food Processing Industry.

- Self-leveling, easy to apply
- Excellent abrasion and impact resistance
- Low odor

PC-650 is a two component, heavy duty non-skid epoxy coating. PC-650 is designed as a heavy duty non-skid coating that helps to provide slip resistance in wet and slippery conditions.

- Designed for wet areas
- Ready to use non-skid coating
- Available in low temperature cure down to 25°F

PC-1850 100% Solids Epoxy is a specially formulated two component, 100% Solids Epoxy Coating designed for use where a hard, durable, tile-like high gloss floor finish is desired.

- Low odor
- Self-leveling, easy to apply
- High gloss, can be applied between 10-60 mils

30075 County Road 49, Loxley, AL 36551

Phone: 251-964-7911

email: info@gulfcoastpaint.com

www.gulfcoastpaint.com

GULF COAST PAINT MFG., INC.

FOOD & BEVERAGE PROCESSING COATINGS

Key Products for Walls, Ceilings, and Steel

PC-590/591, CT-370, MCU-100



CT-370 Acrylic Aliphatic Polyurethane coating with excellent gloss and color retention. Gulf-Thane CT-370 cures to a very tough, abrasive resistant film with exceptional exterior durability, chalk resistance, color stability, and long term gloss retention.

- Finish coat over epoxy primers and MCU's.
- Available in standard industrial colors and safety colors. Excellent coating for piping and exterior steel.



PC-590/591 are 100% solids, solvent free, two component Cyclo-Aliphatic Epoxy Mastic Coatings. Both provide very low permeability along with excellent chemical, impact and abrasion resistance.

- May be applied on wet or underwater surfaces
- Self priming – no primer needed
- Cures down to 35°F



MCU-100 Aluminum is a 1 component, Moisture Cured Urethane designed for structural steel. Excellent coating for freezers and coolers.

- Cures down to 18°F
- 1 component, easy to use.
- Can be topcoated with epoxies and polyurethanes

30075 County Road 49, Loxley, AL 36551

Phone: 251-964-7911

email: info@gulfcoastpaint.com

www.gulfcoastpaint.com